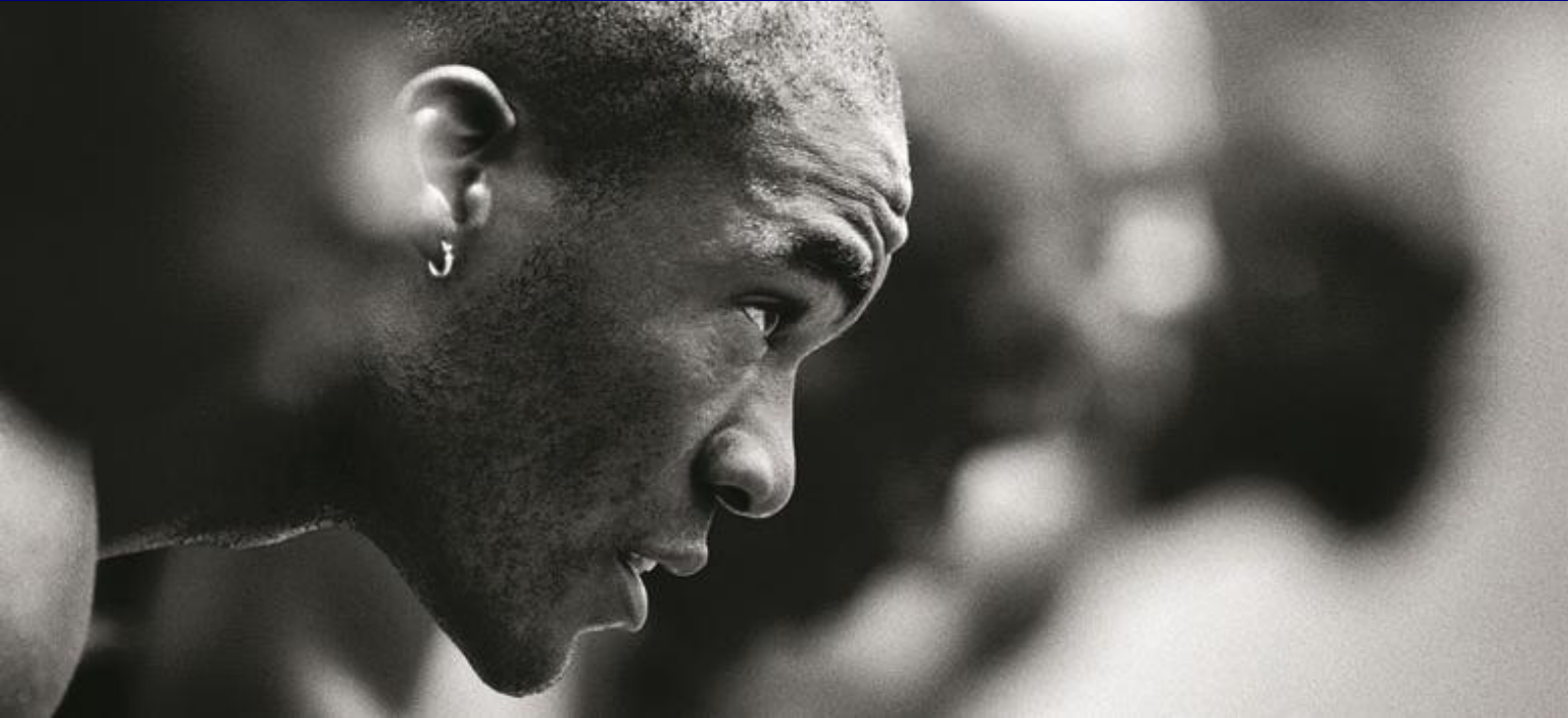


*eDominer Business Intelligence preview
(just a few samples)*



Submitted by

eDominer Systems Private Limited

<http://www.eDominer.com>

<http://www.peoplewareindia.com>

info@eDominer.com

eDominer Rep: Vineet Bansal – vineet@edominer.com



eDominer Systems Pvt. Ltd.

An ISO 9001:2000 Company

33, Dr. Sundari Mohan Avenue, Kolkata-700014

Tel: +91 9831392200 | 033 22866196 | info@edominer.com | www.edominer.com

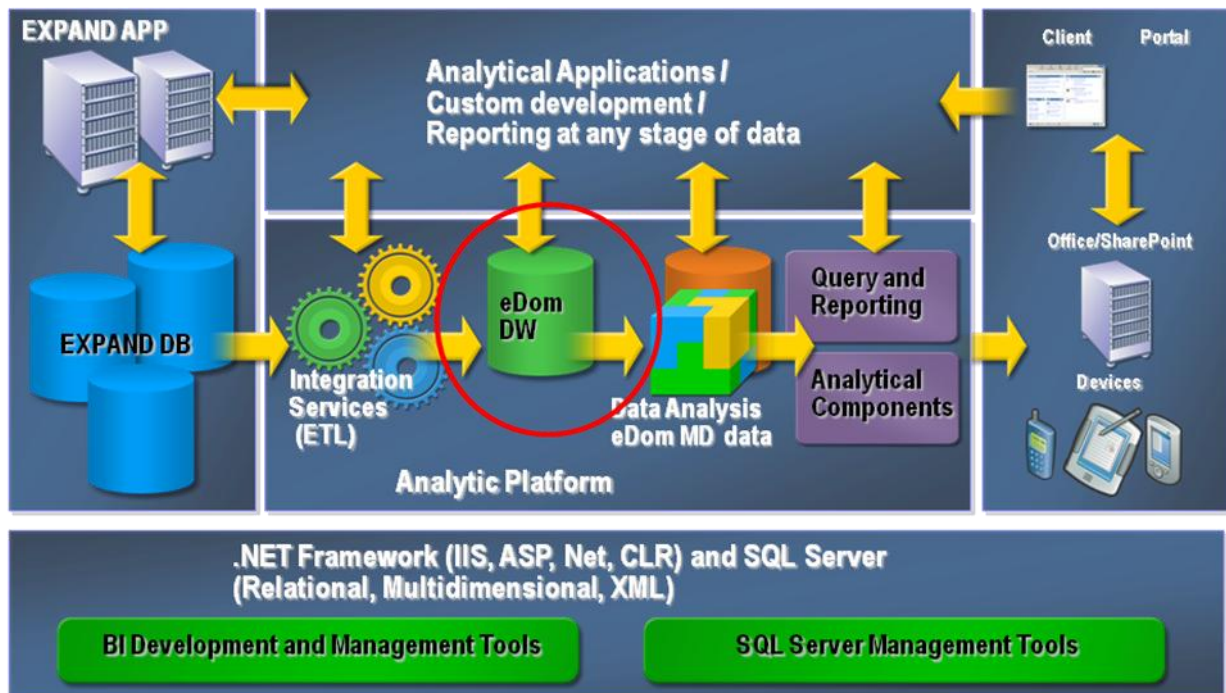
Page 1 of 9

eDominator BI capabilities

eDominator's BI capabilities establishes the corporate context for how information is viewed by everyone at all levels of an organization. eDominator's BI capabilities are built using Microsoft BI stack. Centrally managed and secure, eDominator's BI solution supports corporate and strategic planning by providing a consistent single view of information using key performance indicators and Performance Management dashboards. For broad adoption, organizational BI solutions need to support business processes as part of the fabric of how people perform their daily work. eDominator's BI solution allows an organization to take better business decisions and manage corporate performance. Little wonder that eDominator's BI solution is your best bet on the last stretch of achieving business excellence.



eDominator's BI solution architecture

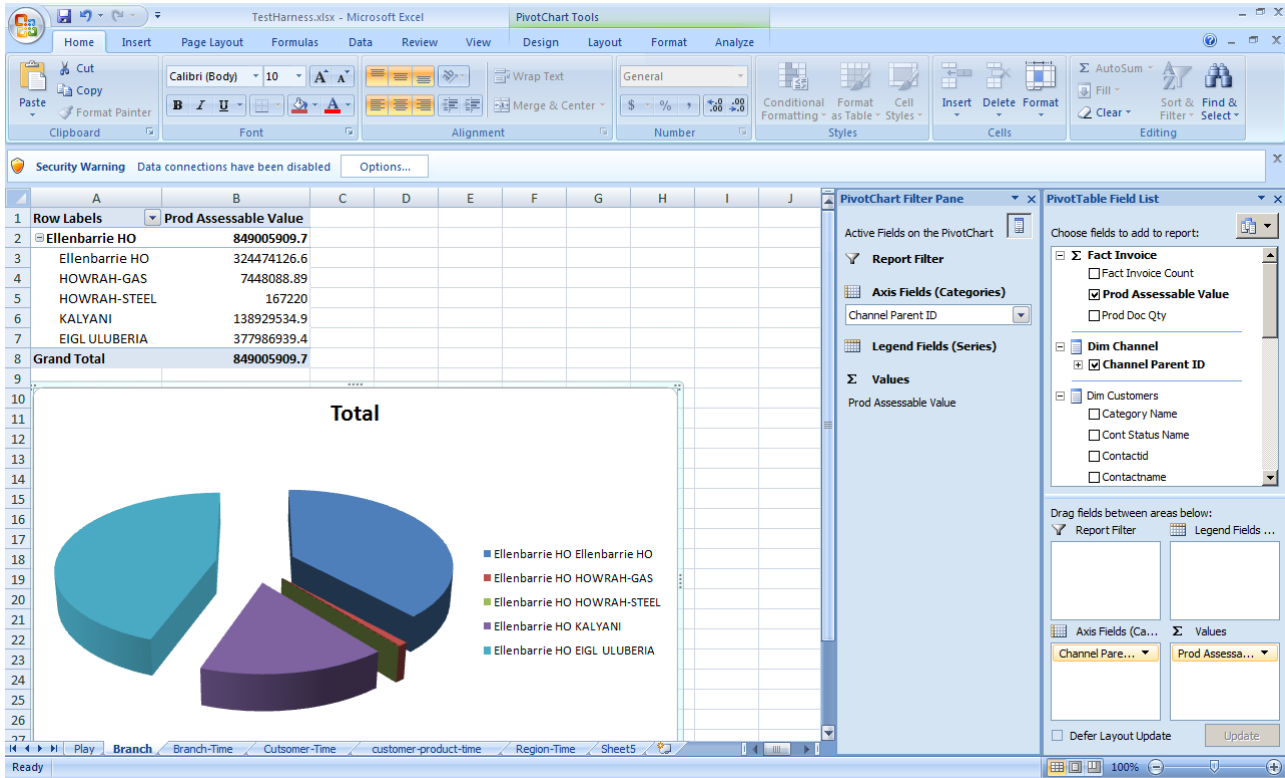


EXPAND APP are application servers hosting the EXPAND web based application. The application interacts real time with the underlying database (EXPAND DB). The data bases can be mirrored or set up in a clustered environment. eDominator's BI architecture extracts data from EXPAND databases, transforms it, and loads it into the data warehouse (eDom DW). The data warehouse consists of factual data from sales, purchase, finance & inventory in a de-normalized structure. These can be termed as functional data marts. The data warehouse also consists of many dimensional data which are used to slice and dice the factual data for analysis purposes. The data warehouse acts as a source for the multidimensional cubes (Data analysis eDom MD data). There are 4 cubes, one each for finance, sales, purchase & inventory. The multidimensional data is used for reporting and analysis. The storage structure is highly optimized for quick aggregations and retrieval. Excel 2007 is used as the BI client to browse and analyze the multidimensional data. Excel is also used to create graphs and charts on the data.

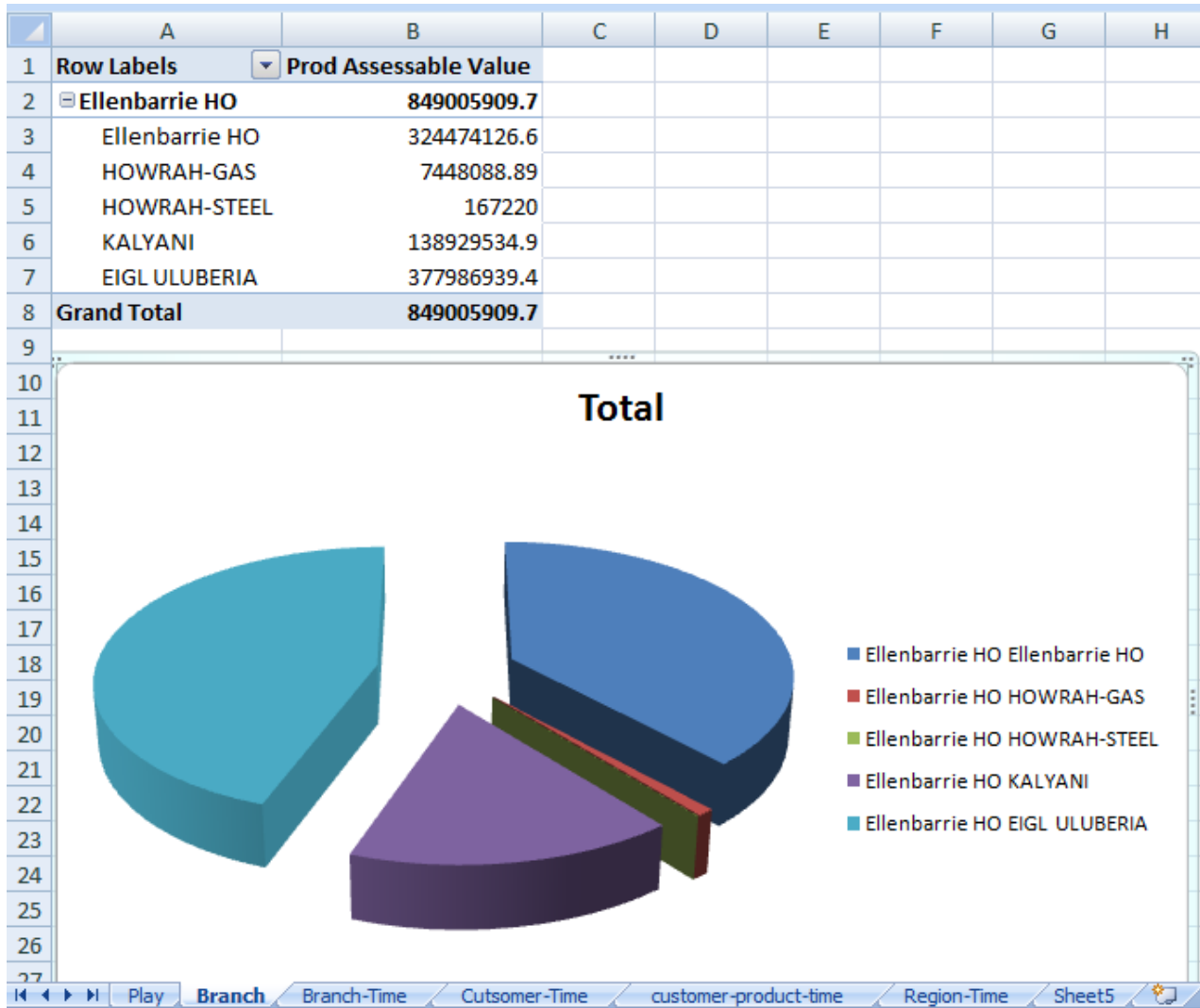
eDominator Business Intelligence preview

(Please note that client data including names and figures are masked for privacy reasons)

Complete interface – Excel 2007

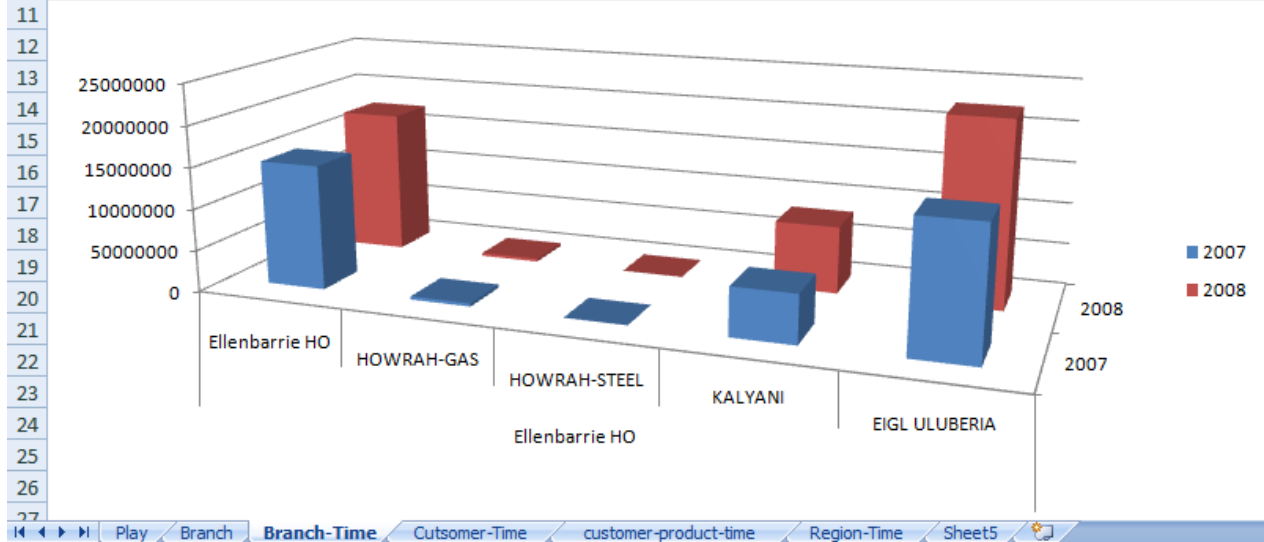


Branch-wise sales



Branch-wise, time-wise sales

1	Prod Assessable Value	Column Labels			
2	Row Labels	2007	2008	Grand Total	
3	Ellenbarrie HO	367154435.3	481851474.4	849005909.7	
4	Ellenbarrie HO	150383269.8	174090856.8	324474126.6	
5	HOWRAH-GAS	3881835.89	3566253	7448088.89	
6	HOWRAH-STEEL	129680	37540	167220	
7	KALYANI	58019899	80909635.88	138929534.9	
8	EIGL ULUBERIA	154739750.6	223247188.8	377986939.4	
9	Grand Total	367154435.3	481851474.4	849005909.7	



Customer-wise, time-wise sales, with visual indicators

Prod Assessable Value	2007	2008	2008 Total	Grand Total			
A. C. INDUSTRIAL GASES	713731.21	251463.8	267194.2	110401.2	266609	895668.2	1609399.41
A. M. ENTERPRISE	757251.52	195991.2	126188.8	39186	186911.4	548277.4	1305528.92
A. R. KHUDA BOKSH	1710	132	180	780	330	1422	3132
AB MAURI INDIA (P) LTD.	1757	364	602	119	1029	2114	3871
ABDUL RAZAK(DAL)			48080			48080	48080
ACTION ISPAT & POWER (P) LTD.	1092770	493948	387436	162246	404782	1448412	2541182
ADHUNIK CORPORATION LTD.	952878.23						952878.23
ADITYA BIRLA INSULATORS LTD.	78933.1	31183.55	43045.45	27694.35	57207.85	159131.2	238064.3
AGARTALA GAS INDUSTRIAL	7000					7000	7000
AIR OFFICER COMMANDING AIR FORCE STATION KALAIKUNDA		105615	23482.14	51900		180997.14	180997.14
AKHILESH KUMAR RAJNARAYAN (D)	1172930		173250		1182500	1355750	2528680
ALCHROME CHEMICAL INDUSTRIES	5979	3375	1785	1666	4479	11305	17284
ALISHAN VANEER & PLYWOOD PVT.LTD.	3045	3045	4935	2310	2100	12390	15435
ALL BACKWARD CLASS RELIEF & DEVELOPMENT MISSION			180			180	180
ALLAHABAD BANK IFB (A/C OF ASSOCIATED PIGMENTS L	1887693.17	2581616	2763496	1631016	2150984	9127112	11014805.17
ALOKE ENGG WORKS	8848	3213	3689	3689	2562	13153	22001
ALOKE KUMAR SIKDAR	14448.28	4403	4641	5330.5	4298	18672.5	33120.78
ALVI TIN TRADERS (D)					323260	323260	323260
AMAL DAS	560	238	119	119	112	588	1148
AMAR WELDING WORKS	838.95	256.2	256.2	256.2	242.2	1010.8	1849.75
AMARLAL KUNDU			60	120		180	180
AMBIKA TRADING COMPANY	23674	67306.2	125333.6	159166.6	47231.8	399038.2	422712.2
AMTALA GHOSHPARA MILAN MANDIR CLUB	110	120	120			240	350
ANAMKA TUPRES (D) LTD.		880	2540	5664		10107	10107

Customer-wise, product-wise, time-wise sales, with visual indicators

1	Prod Assessable Value	Column Labels		
2	Row Labels	2007	2008	Grand Total
3	A. C. INDUSTRIAL GASES	713731.21	895668.2	1609399.41
4	COMPRESSED OXYGEN	713731.2	895668.2	1609399.4
5	LIQUID NITROGEN	0.01		0.01
6	A. M. ENTERPRISE	757251.52	548277.4	1305528.92
7	D. ACETYLENE	508048.71	285258	793306.71
8	ARGON	6720	0	6720
9	COMPRESSED OXYGEN	237316.8	249740.4	487057.2
10	LIQUID NITROGEN	0.01		0.01
11	CARBON DI-OXIDE	2646	0	2646
12	ARGON NITROGEN MIXTURE	0		0
13	COMPRESSED NITROGEN	2520	13279	15799
14	A. R. KHUDA BOKSH	1710	1422	3132
15	AB MAURI INDIA (P) LTD.	1757	2114	3871
16	ABDUL RAZAK(DAL)		48080	48080
17	ACTION ISPAT & POWER (P) LTD.	1092770	1448412	2541182
18	ADHUNIK CORPORATION LTD.	952878.23		952878.23
19	ADITYA BIRLA INSULATORS LTD.	78933.1	159131.2	238064.3
20	AGARTALA GAS INDUSTRIAL	7000		7000
21	AIR OFFICER COMMANDING AIR FORCE STATION KALAIKUNDA		180997.14	180997.14
22	AKHILESH KUMAR RAJNARAYAN (D)	1172930	1355750	2528680
23	ALCHROME CHEMICAL INDUSTRIES	5979	11305	17284
24	ALISHAN VANEER & PLYWOOD PVT.LTD.	3045	12390	15435
25	ALL BACKWARD CLASS RELIEF & DEVELOPMENT MISSION		180	180
26	ALLAHABAD BANK IFB (A/C OF ASSOCIATED PIGMENTS LTD)	1887693.17	9127112	11014805.17
27	ALOK ENGG WORKS	9849	12152	22001

Region-wise, time-wise sales, with visual indicators

